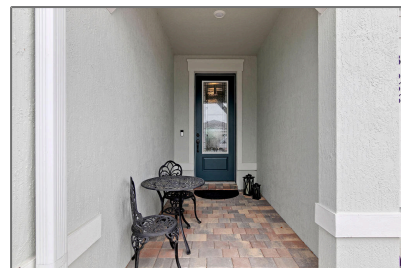


Single family

2,080 Sqft - 13688 Gingerline Drive, Port Saint
Lucie, Florida 34987



Basic [Details](#)

Property Type:	A
Listing Type:	Single family
Listing ID:	RX-10861139
Price:	\$575,000
Bedrooms:	2
Bathrooms:	2.1
Half Bathrooms:	1
Square Footage:	2,080 Sqft
Year Built:	2022

Features

✓	Heating System:	Central, Electric
✓	Cooling System:	Central, Electric
✓	Security:	Burglar alarm, Gate - unmanned
✓	Parking:	Garage - attached, Driveway
✓	Furnished:	Unfurnished

Address [Map](#)

Country:	US
State:	FL
County:	St. Lucie
City:	Port Saint Lucie
Zipcode:	34987
Street:	Gingerline
Street Number:	13688
Longitude:	W81° 34' 22.2"
Latitude:	N27° 13' 29"



Bill Gould

 <http://www.exclusivebetatest.com>

 561-745-2780

 561-379-3141

 561-745-2781

 Bill@ExclusiveCommunities.com

 Gould@WilliamGould.com
