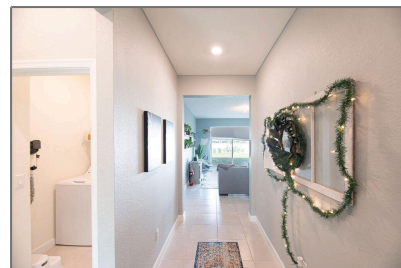


Single family

2,200 Sqft - 12437 Lynch Lane, Port Saint Lucie,
Florida 34987



Basic [Details](#)

Property Type:	A
Listing Type:	Single family
Listing ID:	RX-10852363
Price:	\$424,900
Bedrooms:	3
Bathrooms:	2
Square Footage:	2,200 Sqft
Year Built:	2020

Features

✓	Heating System:	Central
✓	Cooling System:	Central
✓	Security:	Gate - unmanned
✓	Parking:	2+ spaces, Garage - attached, Driveway
✓	Furnished:	Unfurnished

Address [Map](#)

Country:	US
State:	FL
County:	St. Lucie
City:	Port Saint Lucie
Zipcode:	34987
Street:	Lynch
Street Number:	12437
Longitude:	W81° 32' 53"
Latitude:	N27° 19' 38"



Bill Gould
<http://www.exclusivebetatest.com>
561-745-2780
561-379-3141
561-745-2781
Bill@ExclusiveCommunities.com
Gould@WilliamGould.com