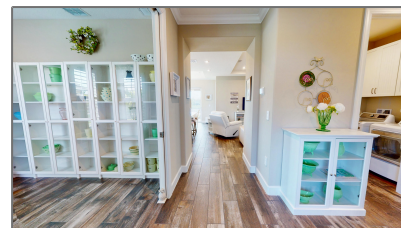


Single family

2,247 Sqft - 9500 Royal Poinciana Drive, Port
Saint Lucie, Florida 34987



Basic [Details](#)

Property Type:	A
Listing Type:	Single family
Listing ID:	RX-10852080
Price:	\$475,000
Bedrooms:	2
Bathrooms:	2
Square Footage:	2,247 Sqft
Year Built:	2021

Features

✓	Heating System:	Central
✓	Cooling System:	Central
✓	Security:	Burglar alarm, Gate - manned, Security sys- owned
✓	Furnished:	Furniture negotiable

Address [Map](#)

Country:	US
State:	FL
County:	St. Lucie
City:	Port Saint Lucie
Zipcode:	34987
Street:	Royal Poinciana
Street Number:	9500
Longitude:	W81° 33' 1.2"
Latitude:	N27° 17' 13.2"



Bill Gould
<http://www.exclusivebetatest.com>
561-745-2780
561-379-3141
561-745-2781
Bill@ExclusiveCommunities.com
Gould@WilliamGould.com