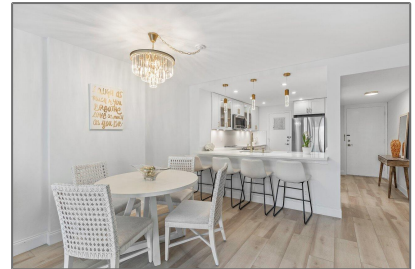
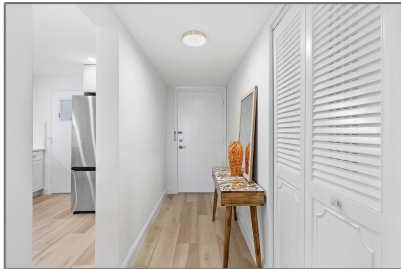


# Condominium

1,047 Sqft - 145 Ocean Avenue 210, Palm Beach Shores, Florida 33404



## Basic [Details](#)

Property Type:	<b>F</b>
Listing Type:	<b>Condominium</b>
Listing ID:	<b>RX-10850571</b>
Price:	<b>\$4,000</b>
Bedrooms:	<b>2</b>
Bathrooms:	<b>2</b>
Square Footage:	<b>1,047 Sqft</b>
Year Built:	<b>1972</b>

## Features

✓	Heating System:	<a href="#">Central</a>
✓	Cooling System:	<a href="#">Central</a>
✓	View:	<a href="#">Ocean, Clubhouse</a>
✓	Parking:	<a href="#">Assigned, Guest, Covered, Vehicle restrictions, Carport - attached</a>

## Address [Map](#)

Country:	<b>US</b>
State:	<b>FL</b>
County:	<b>Palm Beach</b>
City:	<b>Palm Beach Shores</b>
Zipcode:	<b>33404</b>
Street:	<b>Ocean</b>
Street Number:	<b>145</b>
Longitude:	<b>W81° 58' 5.1"</b>
Latitude:	<b>N26° 46' 46.8"</b>



Bill Gould  
<http://www.exclusivebetatest.com>  
561-745-2780  
561-379-3141  
561-745-2781  
[Bill@ExclusiveCommunities.com](mailto:Bill@ExclusiveCommunities.com)  
[Gould@WilliamGould.com](mailto:Gould@WilliamGould.com)