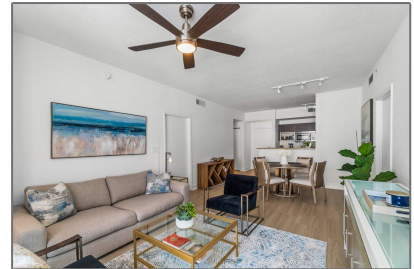
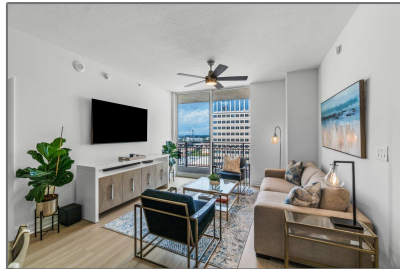


# Condominium

1,335 Sqft - 550 Okeechobee Boulevard 1508,  
West Palm Beach, Florida 33401



## Basic [Details](#)

Property Type:	<b>A</b>
Listing Type:	<b>Condominium</b>
Listing ID:	<b>RX-10839903</b>
Price:	<b>\$769,000</b>
Bedrooms:	<b>2</b>
Bathrooms:	<b>2</b>
Square Footage:	<b>1,335 Sqft</b>
Year Built:	<b>2008</b>

## Features

✓	Heating System:	<b>Central, Electric</b>
✓	Cooling System:	<b>Central, Ceiling fan, Electric</b>
✓	View:	<b>Ocean, Lake, Intracoastal, City</b>
✓	Security:	<b>Security sys-owned, Doorman, Lobby, Entry card</b>
✓	Parking:	<b>Assigned, Guest, Garage - building, Deeded</b>
✓	Furnished:	<b>Furniture negotiable</b>

## Address [Map](#)

Country:	<b>US</b>
State:	<b>FL</b>
County:	<b>Palm Beach</b>
City:	<b>West Palm Beach</b>
Zipcode:	<b>33401</b>
Street:	<b>Okeechobee</b>
Street Number:	<b>550</b>
Longitude:	<b>W81° 56' 37.4"</b>
Latitude:	

N26° 42' 18.2"

## Agent [Info](#)

---



Bill Gould

<http://www.exclusivebetatest.com>

☎ 561-745-2780

☎ 561-379-3141

☎ 561-745-2781

✉ [Bill@ExclusiveCommunities.com](mailto:Bill@ExclusiveCommunities.com)

✉ [Gould@WilliamGould.com](mailto:Gould@WilliamGould.com)

---