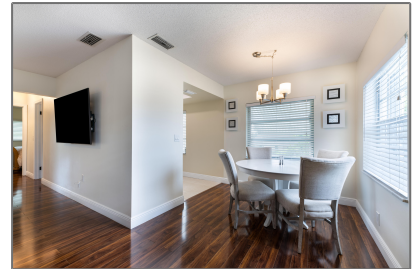


Condominium

912 Sqft - 10000 Meridian Way 9, Palm Beach
Gardens, Florida 33410



Basic [Details](#)

| | |
|-----------------|--------------------|
| Property Type: | A |
| Listing Type: | Condominium |
| Listing ID: | RX-10833055 |
| Price: | \$229,900 |
| Bedrooms: | 2 |
| Bathrooms: | 1.1 |
| Half Bathrooms: | 1 |
| Square Footage: | 912 Sqft |
| Year Built: | 1970 |

Features

| | | |
|---|-----------------|---|
| ✓ | Heating System: | Central, Electric |
| ✓ | Cooling System: | Central, Ceiling fan, Electric |
| ✓ | View: | Canal, Garden |
| ✓ | Parking: | Assigned, Guest, Vehicle restrictions, Open |
| ✓ | Furnished: | Unfurnished |

Address [Map](#)

| | |
|----------------|---------------------------|
| Country: | US |
| State: | FL |
| County: | Palm Beach |
| City: | Palm Beach Gardens |
| Zipcode: | 33410 |
| Street: | Meridian |
| Street Number: | 10000 |
| Longitude: | W81° 55' 6.2" |
| Latitude: | N26° 49' 22.2" |



Bill Gould

 <http://www.exclusivebetatest.com>

 561-745-2780

 561-379-3141

 561-745-2781

 Bill@ExclusiveCommunities.com

 Gould@WilliamGould.com
